

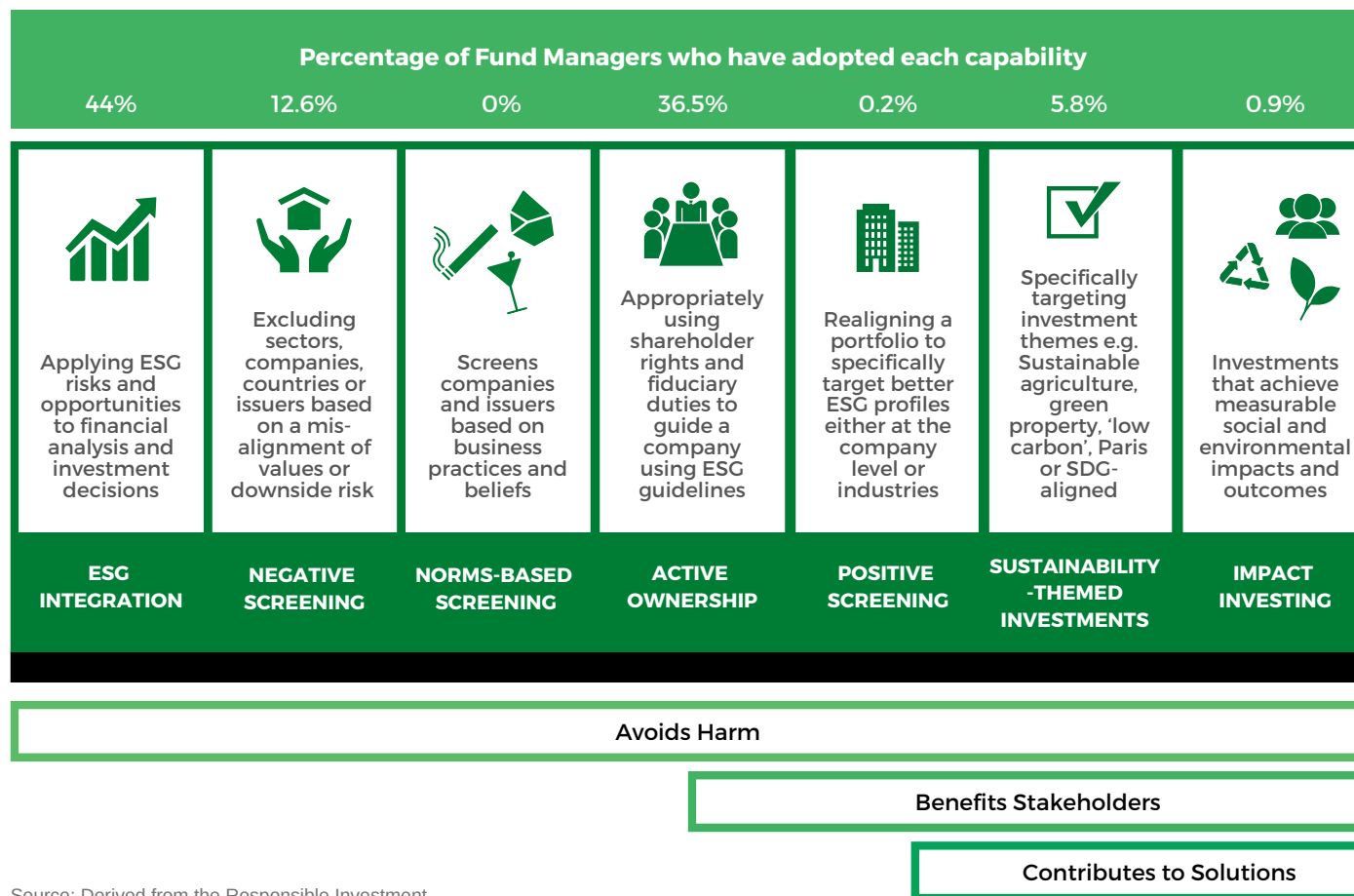
Sustainability performance **ESG**
bribery **ETHICAL**
voting **COAL** human rights mining
Environmental ENGAGEMENT
climate change Child labour **Diversity**
Social UNPRI Weapons
RESOURCE DEPLETION *COMMUNITY IMPACT* fossil fuel

WHAT IS RESPONSIBLE INVESTMENT?

Thematic Carbon **Paris**
Responsible Investing
Active tobacco investment filters
ownership RIAA **philanthropy**
beliefs
controversy **Governance**
employee relations *green washing* CARBON FOOTPRINT
FUTURE GENERATIONS

RESPONSIBLE INVESTMENT SPECTRUM

The Responsible Investment Spectrum defines seven capabilities that investment products utilise in order to integrate positive change into their portfolios and investment decisions.



Source: Derived from the Responsible Investment Association Australasia

RESPONSIBLE INVESTMENT

Below we list many of the terms people associate with RI and fit them within the seven RI capabilities as set out by RIAA.

ESG INTEGRATION	NEGATIVE SCREENING	NORMS-BASED SCREENING	ACTIVE OWNERSHIP	POSITIVE SCREENING	SUSTAINABILITY-THEMED INVESTMENTS	IMPACT INVESTING
<ul style="list-style-type: none"> Financial Risk Environmental Risk Social Risk Governance Risks <p>Environmental</p> <ul style="list-style-type: none"> Climate change and carbon emissions Air and water pollution Biodiversity Deforestation Energy efficiency Waste management Water scarcity <p>Social</p> <ul style="list-style-type: none"> Customer satisfaction Data protection and privacy Gender and diversity Employee engagement Community relations Human rights Labor standards <p>Governance</p> <ul style="list-style-type: none"> Board composition Audit committee structure Bribery and corruption Executive compensation Lobbying Political contributions Whistleblower schemes 	<ul style="list-style-type: none"> All weapons (including firearms) Tobacco Production Gambling Fossil Fuel Exploration, mining and production Pornography production and distribution Alcohol production and sales Nuclear power (including uranium mining) Fossil fuel power generation Labour rights violations Human rights abuses Animal cruelty (e.g. animal testing, live exports) Environmental degradation (including land, air and water) Predatory lending Sugar (high content and/or predatory marketing) Genetic engineering Pesticides Companies that don't pay their fair tax share Meat and meat products 	<ul style="list-style-type: none"> Human Rights Workers Rights Landmines UN Global Compact UN SDGs UN PRI Paris Agreement UN Convention against Corruption UN Rights of Child 	<ul style="list-style-type: none"> Governance Stewardship Voting Engagement Board Structures Company Strategy Remuneration Board Diversity Management 	<ul style="list-style-type: none"> ESG Leaders Improving ESG Companies 	<ul style="list-style-type: none"> Climate Change Paris Agreement Sustainable Development Goals Sustainable Agriculture Sustainable Forestry Renewable Energy Water Efficiency Waste Management Recycling Sustainable Clothing Sustainability Leaders Net Zero Emissions 	<ul style="list-style-type: none"> Affordable Housing Disability Housing Senior Housing Education Future Generations Micro Finance Future Industries Food solutions

What beliefs can you apply to your investment portfolio that avoid harm and target sustainability?

The first step usually involves choosing what you would like excluded or included:

Exclusions

X	
ALCOHOL	ANIMAL CRUELTY
TOBACCO	ENVIRONMENTAL DEGRADATION
GAMBLING	PREDATORY LENDING
WEAPONS	SUGAR
FOSSIL FUELS	GENETIC ENGINEERING
NUCLEAR	PESTICIDES
PORNOGRAPHY	NOT PAYING TAXES
LABOUR RIGHTS VIOLATIONS	MEAT
HUMAN RIGHTS ABUSES	

Inclusions

✓
GREEN BUILDINGS
ENERGY EFFICIENCY
RENEWABLE ENERGY
SUSTAINABLE FORESTRY
SUSTAINABLE AGRICULTURE
WATER
AFFORDABLE HOUSING
INCLUSIVE FINANCING
EDUCATION
HEALTH

Do you wish the firm to have a policy around Stewardship, Engagement and/or Voting?

Other sustainable thematic and impact investing options include:

ENVIRONMENTAL	Energy	Green Buildings
		Energy Efficiency
		Renewable Energy
	Natural Resources	Sustainable Forestry
		Sustainable Agriculture
SOCIAL THEMES		Affordable Housing
		Inclusive Finance
		Education
		Health

For further information about Responsible Investing, contact your Financial Adviser.